



**SLIM PACKAGED**  
Ceiling Concealed

**R32**

**Non-Inverter**

**Mr.SLIM**

# PRODUCT LINE-UP

BTU/HR	18,600	22,500	30,000	35,500	42,000	48,100	Remote Controller
CEILING CONCEALED (NON-INVERTER)	PE-M18JAK	PE-M24JAK	PE-M30JAK	PE-M36JAK	PE-M42JAK	PE-M48JAK	<div>(included)</div> <div></div> <div>PAR-21MAA</div>
PE SERIES							
OUTDOOR UNITS (INVERTER)	PU-M18VAK	PU-M24VAK	PU-M30VAK	PU-M36V/YAK	PU-M42YAK	PU-M48YAK	<div>(optional)</div> <div></div> <div>PAR-SL97A</div>
							

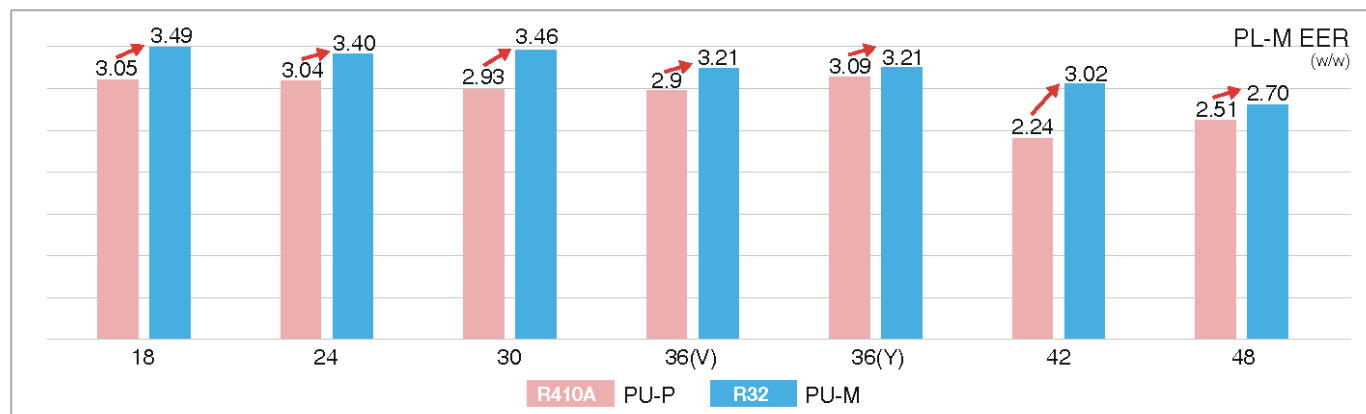
Note: Up to 22,500 Btu/hr entitled for 2 years general warranty and 5 years compressor warranty.  
 From 30,000 Btu/hr to 48,100 Btu/hr is entitled for 1 year warranty and 5 years compressor warranty.  
 PU-M\*\*VAK - Single Phase  
 PU-M\*\*YAK - Three Phase



## MAJOR FEATURES

### High Energy Efficiency

Using the latest R32 refrigerant technology, the R32 SLIM series lessens global warming impact, refrigerant charge, while providing higher cooling capacity and better heat transfer compared to R410A refrigerant. This however improves COP for all new R32 SLIM series which promotes higher energy efficiency for all models in the series.



Specifications reported are figures when PL-P\*\*BAK/PL-M\*\*BAK is connected.

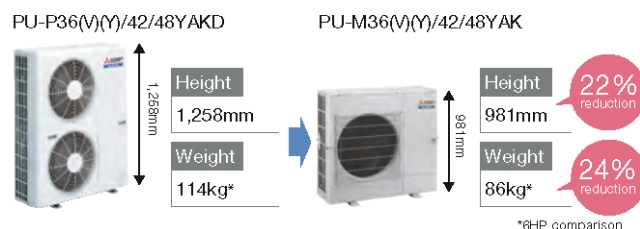
### Longer Piping (18/24/30/36)

Improved piping length (18/24/30/36) and height difference (18/24/30) offers better installation flexibility

Capacity Class	Max. Piping Length (m)		Max. Height Difference	
	R410A PU-P	R32 PU-M	R410A PU-P	R32 PU-M
18/24	30	35	10	20
30	30	50	15	30
36 (V) (Y)	40	50	30	30
42/48	50	50	30	30

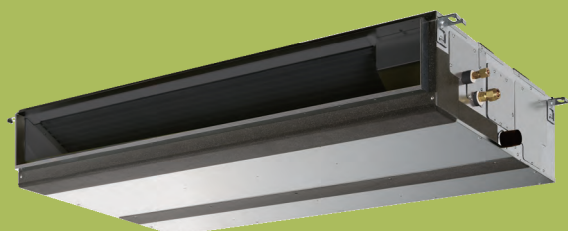
### Light weight and compact size (36/42/48)

Compact design fits into narrow outdoor unit space and provides optional solution for condominiums and shops. Light weight design provides easier installation.



# Ceiling-concealed

(PE SERIES)



PE-M18/24/30/36/42/48JAK

(included)



PAR-21MAA-N

(optional)

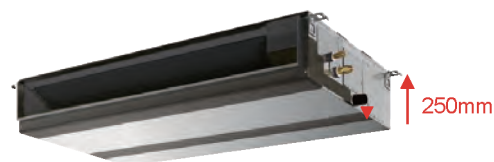


PAR-SL97A-E

The thin, ceiling-concealed indoor units of the PE series are the perfect answer for the air-conditioning requirements of buildings with minimum ceiling installation space and wide-ranging external static pressure.

## Compact Indoor Units

For all PE Series models, unit height is 250mm which allows installation in tight spaces such as ceiling cavities or drop-ceilings.



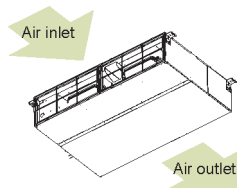
PE-M18/24/30/36/42/48JAK

Height reduced

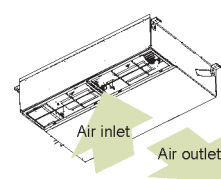
## Air Inlet

Units with bottom inlets make more noise than those with rear inlets. It is recommended that the rear inlet be selected when installing a unit in a room that should be quiet, such as a bedroom.

(1) Rear inlet



(2) Bottom inlet

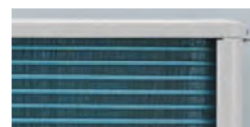


## Improved Cooling Capacity

With the improved cooling capacity, this new line-up provides optimum performance and room comfort wherever they are installed.

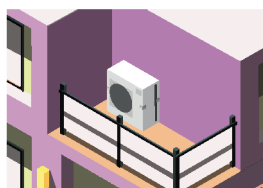
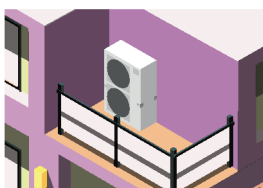
## NEW Blue Fin Condenser

A special coating is applied to the heat exchanger to increase corrosion toughness.



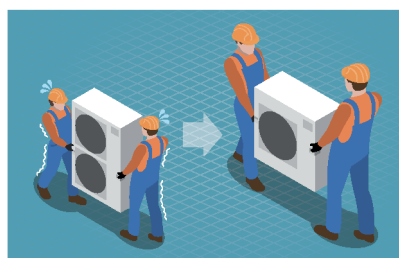
## Better Aesthetic View

Conventional outdoor units may compromised aesthetic view. With the new compact design, the new line-up can be installed in locations while maintaining its aesthetics.



## Easy Transportation and Installation

The reduced weight and height allows ease of carry and installation, thus better transportation performance.



Transportation efficiency improves due to unit's low height. The unit can even be transported by minivan.



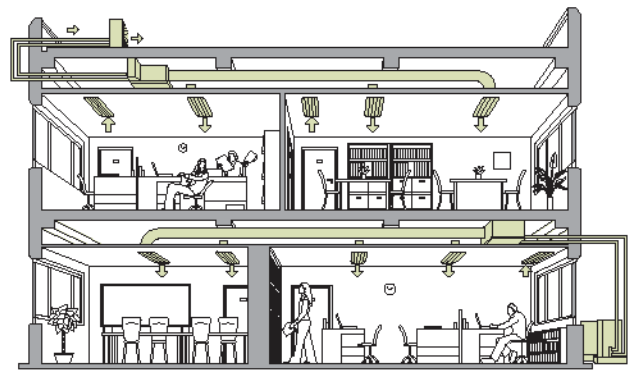
## Wide Selection of External Static Pressure

Three-stage external static pressure conversions are available. Capable of being set to a maximum of 70Pa, units are applicable to a wide range of building types.

### ■ External static pressure setting

Series	18	24	30	36	42	48
PE-M-JAK	30/50Pa		30/50/70Pa			

### ■ Flexible duct design



## FEATURES SUMMARY

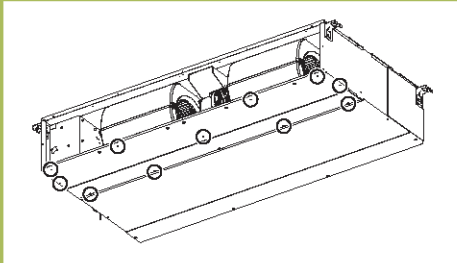
Performance	Comfort	Installation & Maintenance
<ul style="list-style-type: none"> <li>• High energy efficiency</li> <li>• Improved cooling capacity</li> <li>• Compact indoor units</li> <li>• Air Inlet</li> <li>• Wide selection of External Static Pressure</li> <li>• On/Off Operation Timer</li> </ul>	<ul style="list-style-type: none"> <li>• Computerized dehumidifier</li> <li>• Quiet operation</li> <li>• Drain Pump *optional</li> </ul>	<ul style="list-style-type: none"> <li>• Chargeless system</li> <li>• Smooth Installation</li> <li>• Self-diagnostic function</li> <li>• System control</li> <li>• Auto restart</li> <li>• Grooved piping</li> <li>• Failure recall function</li> </ul>



# EASY SERVICE MAINTENANCE

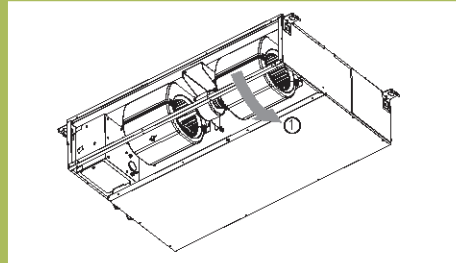
## ■ Easy Accessible to Blowers and Motors

Removing rear bottom panel only allow easy access to Blowers and Motors



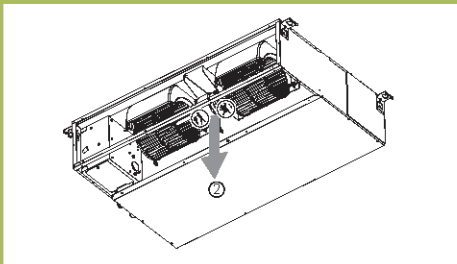
1) Removing the filter and the bottom plate

- a. Remove the fixing screws on the bottom plate



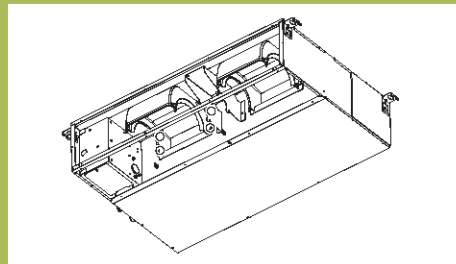
2) Removing the fan casing (bottom half)

- a. Squeeze the tabs on the fan casing to remove it in the direction arrow ①



3) Removing the motor cable

- a. Remove the motor cable through the rubber bush



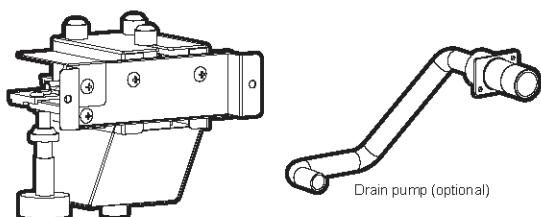
4) Removing the fan motor and Sirocco fan

- a. Remove the two motor fixing screws to remove the motor and the Sirocco fan in the direction arrow ②
- b. Remove the four fan case fixing screws to take the top half of the fan casing off

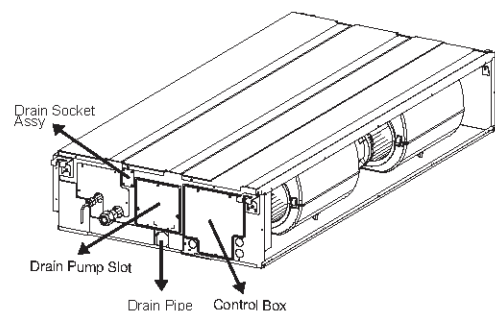
## OPTIONAL ACCESSORY

### ■ Drain Pump Option Available

- All Ceiling Concealed models offered optional drain pump accessory [PAC-DRP06SL-E]



### Drain Pump Slot



# SPECIFICATIONS

## PE SERIES

Models			PE-M18JAK-PA	PE-M24JAK-PA	PE-M30JAK-PA	PE-M36JAK-PA	PE-M36JAK-PA	PE-M42JAK-PA	PE-M48JAK-PA	
Cooling capacity		kW	5.45	6.60	8.80	10.40	10.40	12.31	14.10	
Cooling capacity		BTU/h	18,600	22,500	30,000	35,500	35,500	42,000	48,100	
Total input		kW	1.63	2.10	2.67	3.35	3.35	4.40	5.22	
Total current		A	7.7	9.9	13.4	15.6	7.4	9.9	11.9	
EER		W/W	3.35	3.14	3.30	3.10	3.10	2.80	2.70	
Indoor unit	Model name		PE-M18JAK-PA	PE-M24JAK-PA	PE-M30JAK-PA	PE-M36JAK-PA	PE-M36JAK-PA	PE-M42JAK-PA	PE-M48JAK-PA	
	Power supply		1ph 220-240V 50Hz							
	Airflow (low-high)	CMM	17.5 - 27.0	17.5 - 27.0	24.0 - 34.0	24.0 - 34.0	24.0 - 34.0	28.0 - 42.0	28.0 - 42.0	
		CFM	618 - 953	618 - 953	848 - 1200	848 - 1200	848 - 1200	989 - 1483	989 - 1483	
	External static pressure*	Pa	30-50			30-50-70				
	Operation control and thermostat		Remote control and Built-in							
	Noise level (low-high)	dB (A)	30-38	30-38	34 - 42	34 - 42	34 - 41	36-44	36-44	
	Unit drain pipe		mm O.D 32mm							
	Dimensions	W	mm	1,100			1,400			
		D	mm	732						
H		mm	250							
Weight		kg	29			38				
Outdoor unit	Model name		PU-M18VAK-PA	PU-M24VAK-PA	PU-M30VAK-PA	PU-M36VAK-PA	PU-M36VAK-PA	PU-M42YAK-PA	PU-M48YAK-PA	
	Power supply		1ph 220-240V 50Hz					3ph 380-415V 50Hz		
	Refrigerant (R32) control		Capillary Tube							
	Airflow	CMM (CFM)	32 (1130)	59 ( 2084 )	50 ( 1765 )	92 ( 3249 )				
	Noise level	dB (A)	53	56	55	54		56		
	Dimensions	W	mm	718			840			
		D	mm	255			330			
		H	mm	525			880			
	Weight		kg	35	51	63	81	82	84	86
	Max. height difference		m	20			30			
	Max. piping length		m	35			50			
	Pipe size (outer diameter)		mm	Liquid: 6.35 Gas: 12.7	Liquid: 6.35 Gas: 15.88	Liquid: 9.52 Gas: 15.88				
	Chargeless piping length		m	7.5			10			
Guaranteed Operating Range		Upper limit (DB)	46							
		Lower limit (DB)	21							

\*Rating conditions: Cooling - Indoor: 27°C(80°F)DB, 19°C(66°F)WB, Outdoor: 35°C(95°F)DB  
 \*Refrigerant piping length (one-way): 7.5m(25ft)  
 \*Total input based on the indicated voltage (indoor/outdoor): 1ph 230V 50Hz, 3ph 400V 50Hz  
 \*The sound pressure measurement is conducted in an anechoic chamber under the test conditions of Japanese Industrial Standards.  
 \*The actual sound level depends on the design and appropriate set up of duct work, distance from the unit and acoustic environment.  
 \*Measured with a 2.0m. Air outlet duct and 1.0m. Air inlet duct attached. Measured point 1.5m. Below the unit.  
 Rated External static pressure 30 Pa. (PE-M18/24), 50Pa. (PE-M30/



### HEAD OFFICE:

**MITSUBISHI ELECTRIC SALES MALAYSIA SDN BHD** (187101000755)

Lot 11, Jalan 219, PO Box 1036, 46860 Petaling Jaya, Selangor Darul Ehsan, Malaysia.

Hotline: 1-300-13-1303 Fax: 03-7956 3950

Website: [www.mitsubishielectricmalaysia.com](http://www.mitsubishielectricmalaysia.com)

### Branches:

**Penang** : 25-G, Pusat Perniagaan Perdana Jaya, Jalan Permatang Rawa, 14000 Bukit Mertajam, Pulau Pinang.  
Tel: 04-510 1838 Fax: 04-510 1835

**Perak** : No. 41, Laluan Tasak Timur 15, (Lorong Bercham 4), Taman Mewah, Bercham, 31400 Ipoh, Perak.  
Tel: 012-608 5789

**Malacca** : 365-H, Jalan Melor 4, Taman Perlinggit Jaya, 75400 Malacca.  
H/P: 012-977 9221

**Kelantan** : 1683, Kg. Dusun Raja Panji, 16100 Kota Bharu, Kelantan.  
H/P: 010-403 2899

**Johor** : PLO 32, Kawasan Perindustrian Senal II, 81400 Senal, Johor Darul Takzim.  
Tel: 07-598 4327 Fax: 07-598 4173

**Sarawak** : 28F Lorong 23, Jalan Central Timur, 93300 Kuching Sarawak.  
Tel: 016-866 1383



Download MESM apps



Mitsubishi Electric Consumer Products and Mitsubishi Electric Shizuoka Works acquired ISO 9001 certification under Series 9000 of the International Standard Organization (ISO) based on a review of Quality Warranties for the production of air conditioning equipment. The plant also acquired environmental management system standard ISO 14001 certification.



Authorised Dealer: